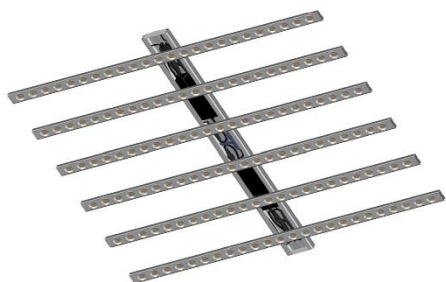


Description: RX-G5025 600W economical plant light module, medical plant growth module and array lamp, New reflective design, patent pending, Concentrating Light efficiently and More uniform spectral radiation, directional light ,high light utilization efficiency, more efficient comparison with Common grow lights. optimal plant-specific spectrum, to meet the light requirements of medicinal plants, fully stimulate medicinal ingredients. It is especially used for indoor planting of medicinal plants



1. Low-cost, economical plant light module
2. High power PPF PAR up to 1500umol/s, PPF efficiency up to 2.5umol/s
3. Unique reflective design, PPFD up to 1100umol/m²/s @0.15m
4. Not waterproof, can be customized waterproof IP65
5. K6 Array plant light Power 600W/AC230V, 550W/100V
6. LED grow bar Max 120W/Bar
7. Long life up to 50,000 hours
8. CE RoHS FCC

Model	Dimension LxWxH	Spectral Wavelength	Photon PPFD μmol/m²/s	Photosynthetic Photon Flux	Power Test Input	Comment
RX-G5025	1203x50x29mm 47"x1.9"x 1.1"	F15 35K24R2	230μmol@0.2m 8" 14601Lx	6653Lm 106umol/s	1A @ 35.95V	36W 2.9μmol/J
			408μmol@0.2m 8" 25785Lx	11862Lm 189umol/s	1.8A @37.31V	67W 2.8μmol/J
			623μmol@0.2m 8" 39343Lx	17963Lm 287umol/s	2.8A @38.73V	108W 2.7μmol/J
		F16 35K24R1FR1	210μmol@0.2m 8" 13988Lx	6634Lm 100umol/s	1A @36.16V	36W 2.8μmol/J
			374μmol@0.2m 8" 24885Lx	11756Lm 178umol/s	1.8A @37.55V	68W 2.6μmol/J
			565μmol@0.2m 8" 37607Lx	17838Lm 270umol/s	2.8A @ 39.1V	109W 2.5μmol/J
RX-G5025-K6	1205x1203x100mm 47"x47"x 3.9"	F15	1100μmol@0.15m 6" 68559Lx	254μmol/s X6 1500μmol/s	610W AC230V	2.5μmol/J ELGC-300 2pcs
			987μmol@0.3m 12" 61899Lx			
			726μmol@0.5m 20" 45659Lx			

Surface temperature rise Tc 20°K , Operating temperature: -30°C ~ 40°C , Lifespan: 50,000 hours (Note: Ta ≤ 25°C)

Tolerance range for optical and electrical data: ±10 % . Light emitting angle: 90 °

Recommended irradiation distance 0.2 ~ 0.5m for medicinal planting For Shelf planting

The above data is for reference only!

Dimension:

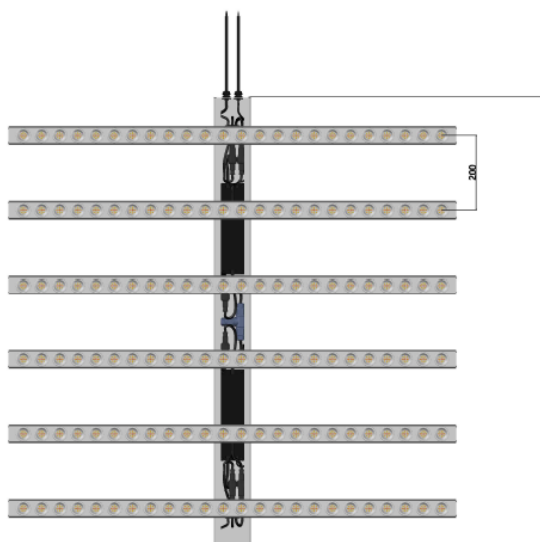


RX-G5025 Only LED grow Bar



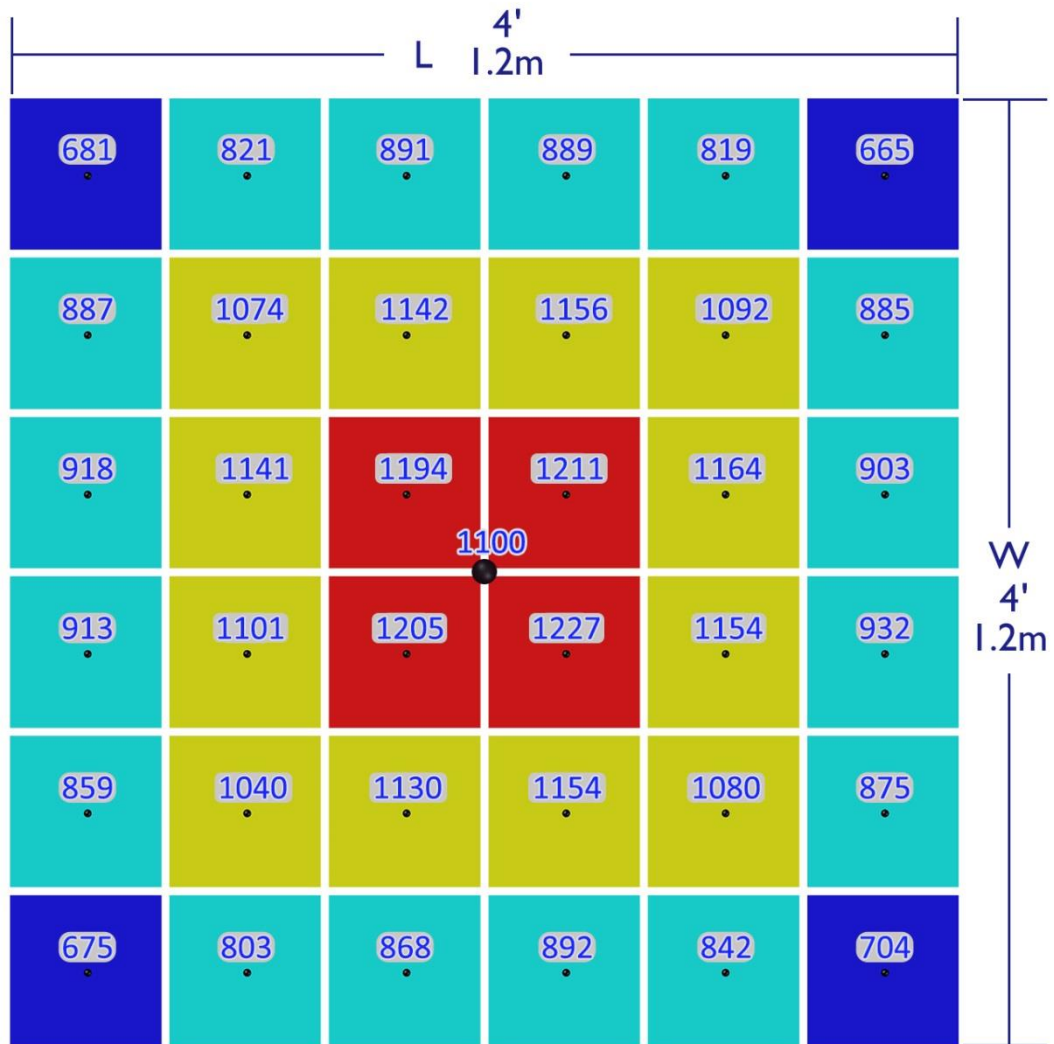
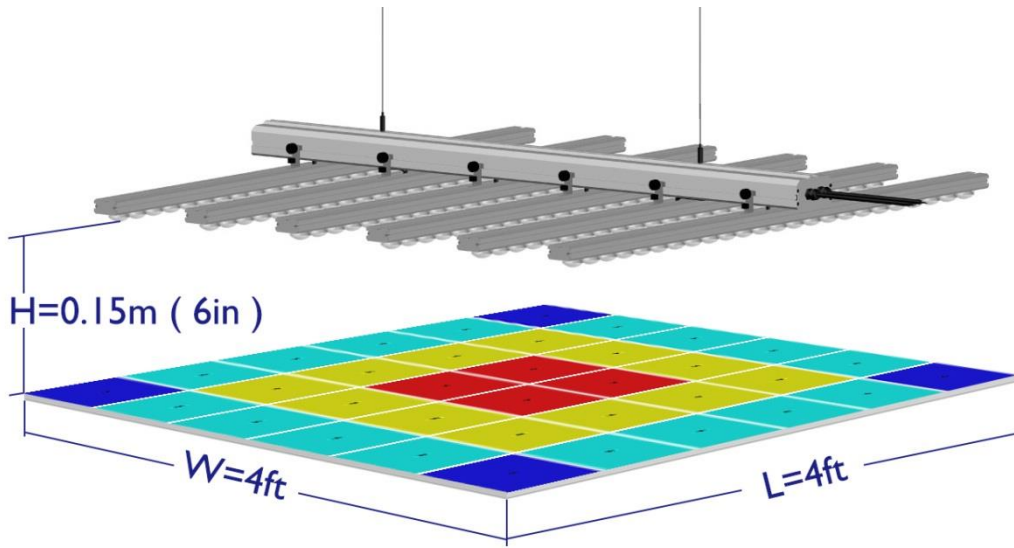
Unit: mm

RX-G5025-K6



RX-G5025-K6

- RX-G5025-K6-F15 600W 37-point test, Coverage area: 48'' x 48'' (1.2m x 1.2m), Test height: 6'' (0.15m)

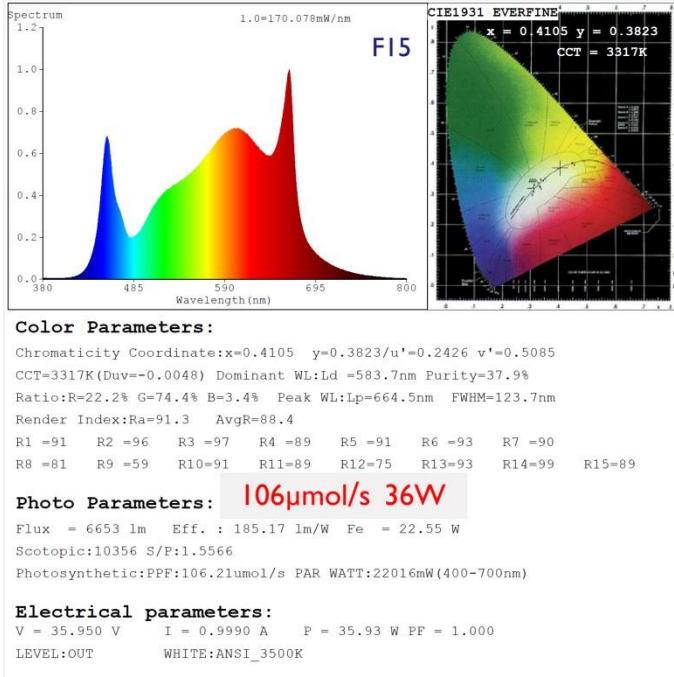


● PPFD Test Point Average: 975 $\mu\text{mol}/\text{m}^2/\text{s}$

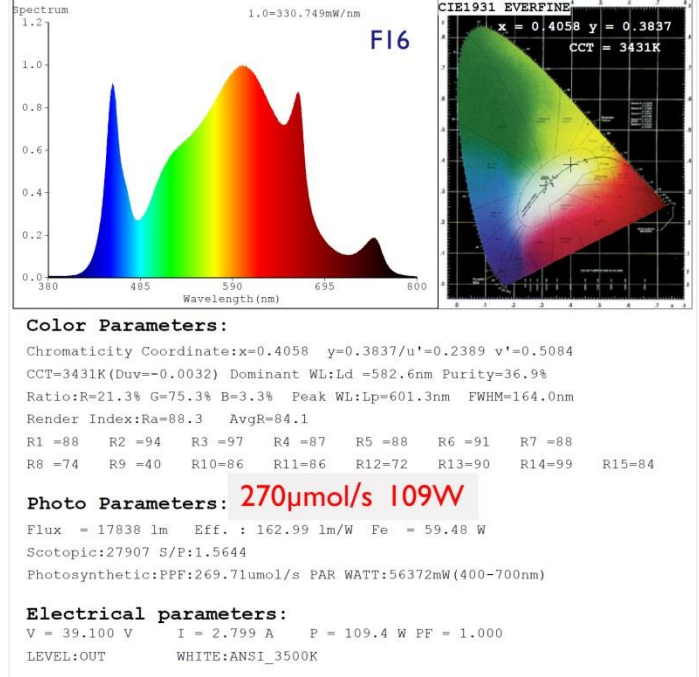
RX-G5025-K6 600W 15cm test

Center point PPFD: 1100 $\mu\text{mol}/\text{m}^2/\text{s}$ The PPFD average is 975 $\mu\text{mol}/\text{m}^2/\text{s}$

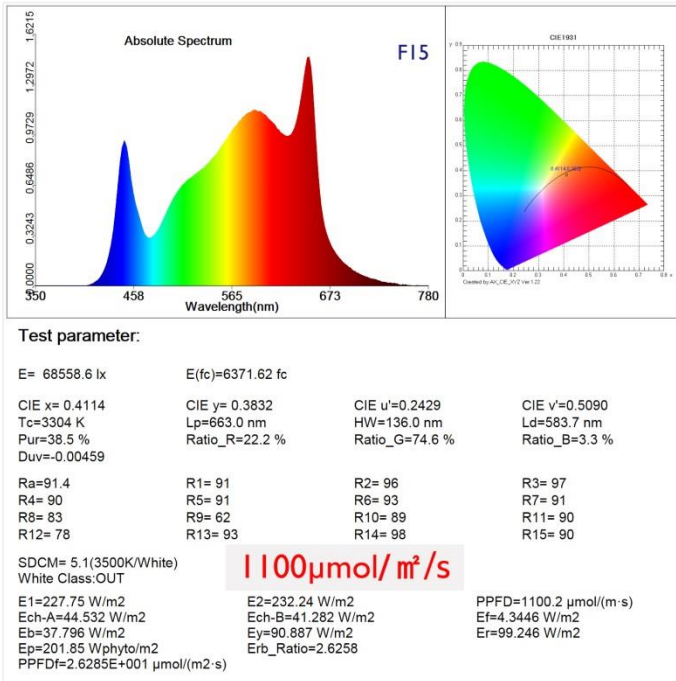
● Testing report



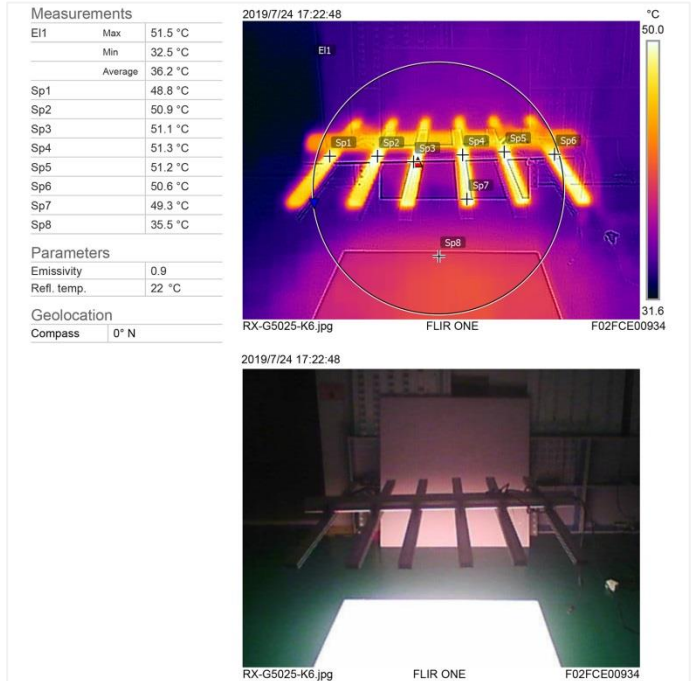
RX-G5025-FI5 IA PPF Test



RX-G5025-FI6-2.8A PPF Test



RX-G5025-K6-FI5-600W 0.15m PPF Output



RX-G5025-K6-FI5 600W Surface temperature Test